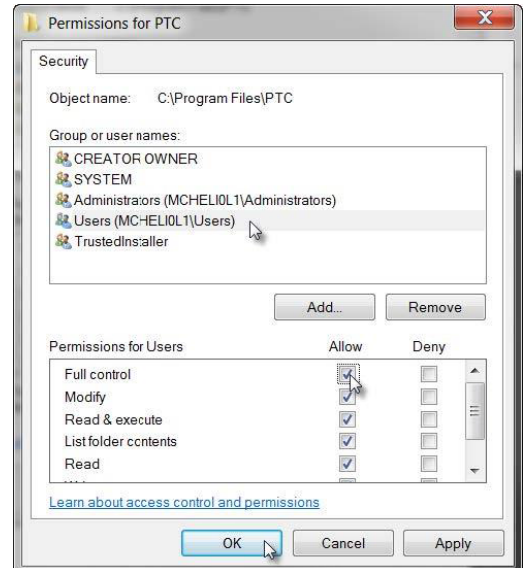


Creo 6.0 - Schools Configuration Guide

1. Set the security settings of the **PTC** folder:

- Navigate to **C:\Program Files**
- Right-click on the **PTC** folder and select Properties
- Select the **Security** tab and then click the **Edit...** button
- Under **Group** or user names select **Users** and then click the check box next to **Full control** and under **Allow**
- Click **OK** to set your permissions for the folder and **OK** again to set your Properties



2. Run **configure_for_schools.bat** file:

- Navigate to the **Common Files** folder **C:\Program Files\PTC\Creo 6.0.##\Common Files\creo_standards**
represents the build code of Creo you downloaded. The actual number will vary as additional Creo builds are released
- Double click on the **configure_for_schools** file
- Type the number of the drawing standard and unit system that you would like to use and press **Enter**
 - If you are using any of PTC's curriculum such as **How to Model Almost Anything**, please use **1 – ASME drawings with INLBS unit system**
 - If you will need to use **Metric** system, please use **2 – ASME drawings with MMKS unit system**, or the one that **your professor asks you to use**.
- If prompted with "Does ..\text\creo_parametric_admin_customization.ui specify a file name or directory name on the target (F = File, D = directory)" type in "**F**" to denote a file
- Press any other key to exit

You are now ready to use Creo 6.0 – Schools Configuration

For additional resources, please visit www.ptc.com/academic-program.

If you need technical support please visit **Support Forum:**

communities.ptc.com/community/academic-program/support