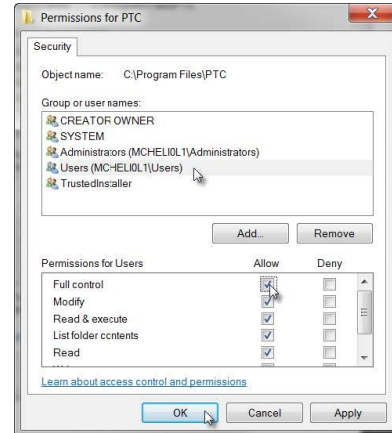


PTC Creo 3.0 – Schools Configuration Guide

1. Set the security settings of the **PTC** folder:
 - Navigate to **C:\Program Files**
 - Right-click on the **PTC** folder and select **Properties**
 - Select the **Security** tab and then click the **Edit...** button
 - Under **Group or user names** select **Users** and then click the check box next to **Full control** and under **Allow**
 - Click **OK** to set your permissions for the folder and **OK** again to set your Properties



2. Run the **configuration.bat** file:
 - Navigate to the **Common Files** folder **C:\Program Files\PTC\Creo 3.0[M###]Common Files\creo_standards**
represents the build code of Creo you downloaded. The actual number will vary as additional Creo builds are released
 - Double click on the **configure_for_schools** file
 - Type the number of the drawing standard and unit system that you would like to use and press **Enter**
 - If you are using any of PTC's curriculum such as **How to Model Almost Anything**, please use **1 – ASME drawings with INLBS unit system**
 - If prompted with "Does ..\text\creo_parametric_admin_customization.ui specify a file name or directory name on the target (F = File, D = directory)" type in "**F**" to denote a file
 - Press any other key to exit

You are now ready to use PTC Creo – Schools Configuration

For additional resources, please visit www.ptc.com/go/academicprogram. If you need technical support please visit one of the following:

- **Support Forum:** communities.ptc.com/community/academic-program/support
- **Support Request:** www.ptc.com/go/academic-request